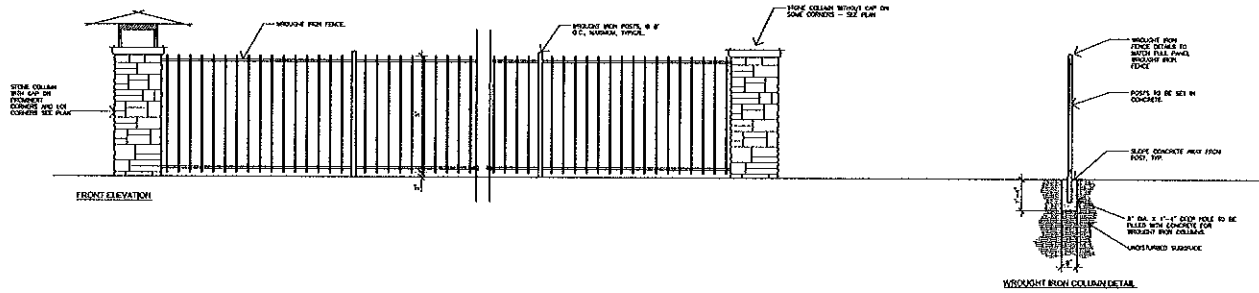
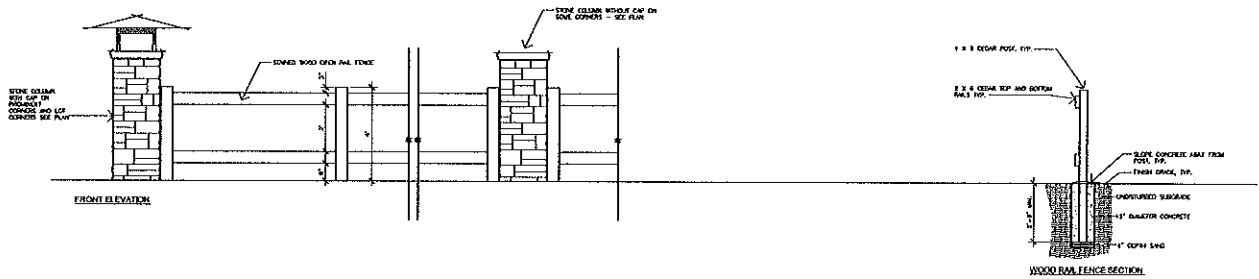


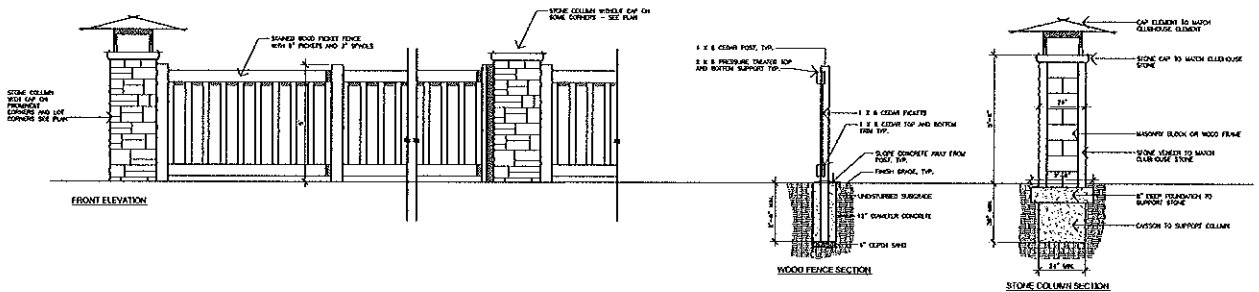
FENCE TYPE 1 - WROUGHT IRON  
NOT TO SCALE



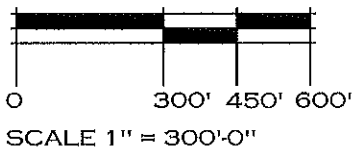
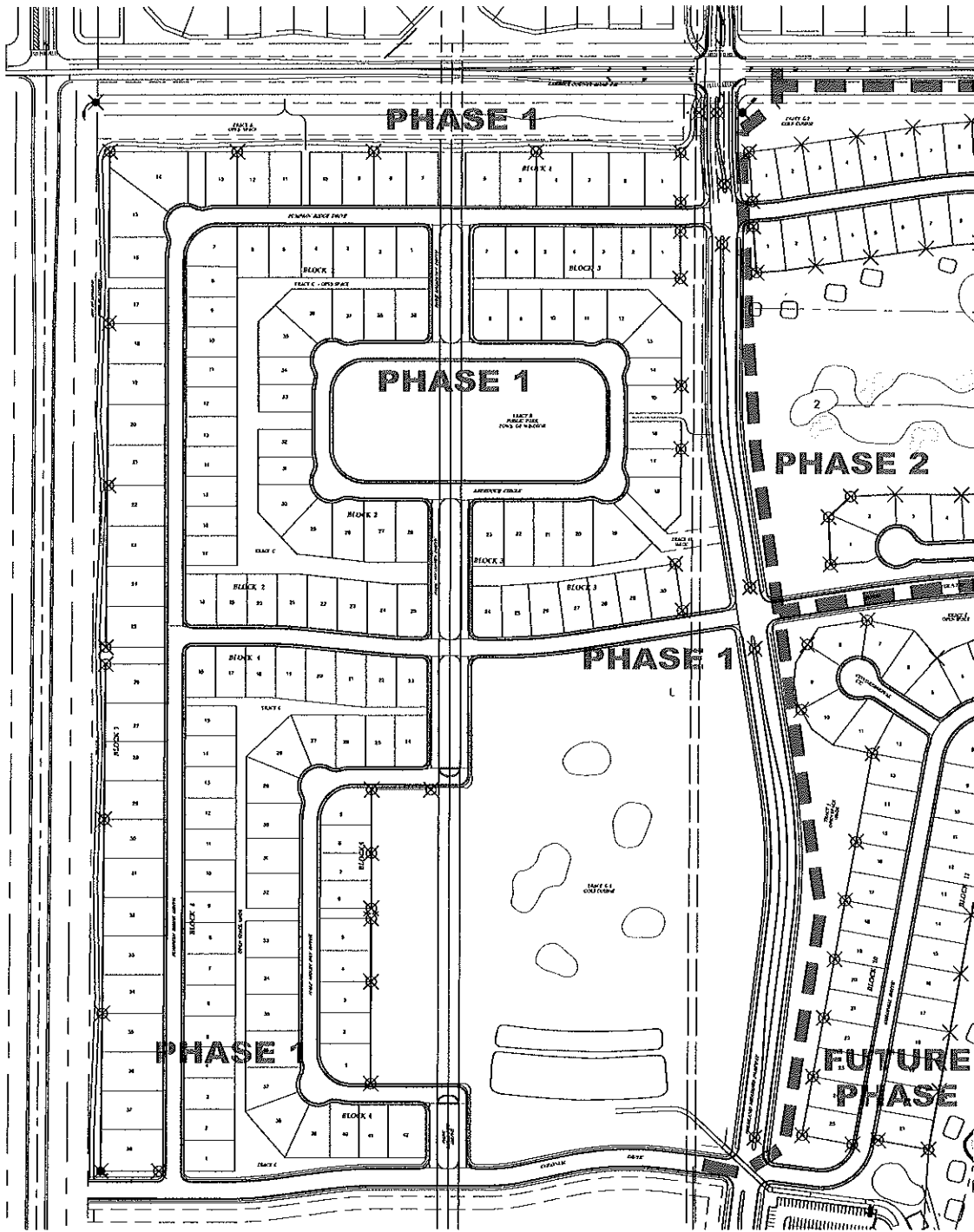
FENCE TYPE 2 - OPEN RAIL FENCE  
NOT TO SCALE



FENCE TYPE 3 - STONE COLUMNS WITH WOOD PICKET FENCE  
NOT TO SCALE



HIGHLAND MEADOWS GOLF COURSE  
PHASE 1 AND PHASE 2  
FENCING DETAILS:  
JULY 14, 2004



FENCING AND COLUMN LEGEND:

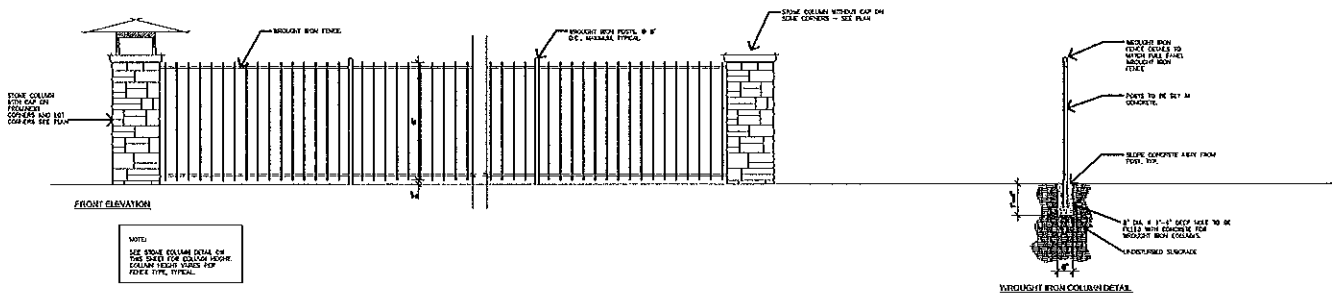
PHASE 1 HOMEOWNER'S FENCE LEGEND		
-----	FENCE TYPE 1	PHASE 1 803 L.F.
-----	FENCE TYPE 2	7,028 L.F.
-----	FENCE TYPE 3	2,327 L.F.
⊗	COLUMN WITH LIGHT	PHASE 1 3 FOR MONUMENT STORAGE
⊘	COLUMN CAP WITHOUT LIGHT	33

# HIGHLAND MEADOWS GOLF COURSE

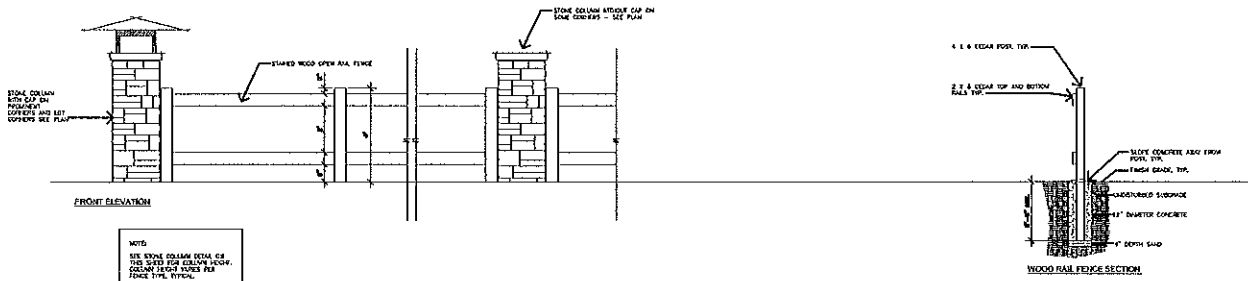
## PHASE 1 FENCING PLAN:

JULY 14, 2004

FENCE TYPE 1 - WROUGHT IRON  
 3/8" = 1'-0"



FENCE TYPE 2 - OPEN RAIL FENCE  
 3/8" = 1'-0"



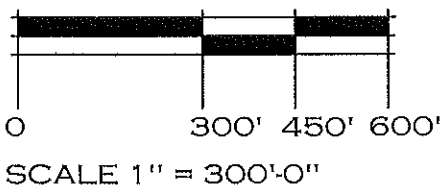
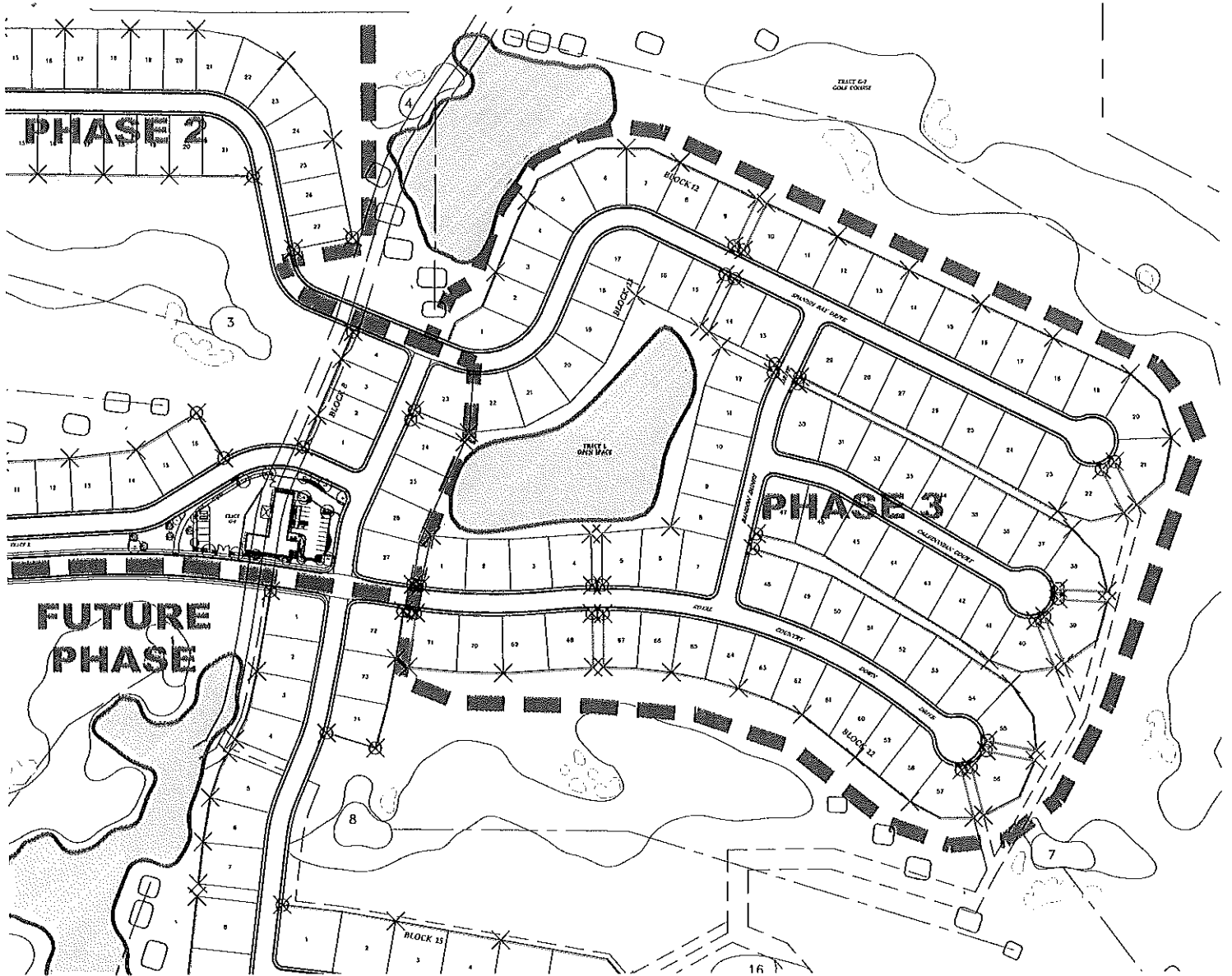
NOTE:  
 SIDEYARD-FENCING IN PHASE 3 SHALL MATCH REAR YARD FENCING, TYPICAL

# HIGHLAND MEADOWS GOLF COURSE

## PHASE 3

### FENCING DETAILS:

APRIL 18, 2005



NOTE:  
SIDEYARD FENCING IN  
PHASE 3 SHALL MATCH  
REAR YARD FENCING,  
TYPICAL

FENCING AND COLUMN LEGEND:

PHASE 3 HOMEOWNER'S FENCE LEGEND	
	PHASE 2
	7,712 L.F.
	FENCE TYPE 2
	2,703 L.F.
	PHASE 2
	29
	COLUMN CAP WITHOUT LIGHT
	45
	COLUMN WITHOUT CAP

# HIGHLAND MEADOWS GOLF COURSE

## PHASE 3 FENCING PLAN:

APRIL 18, 2005