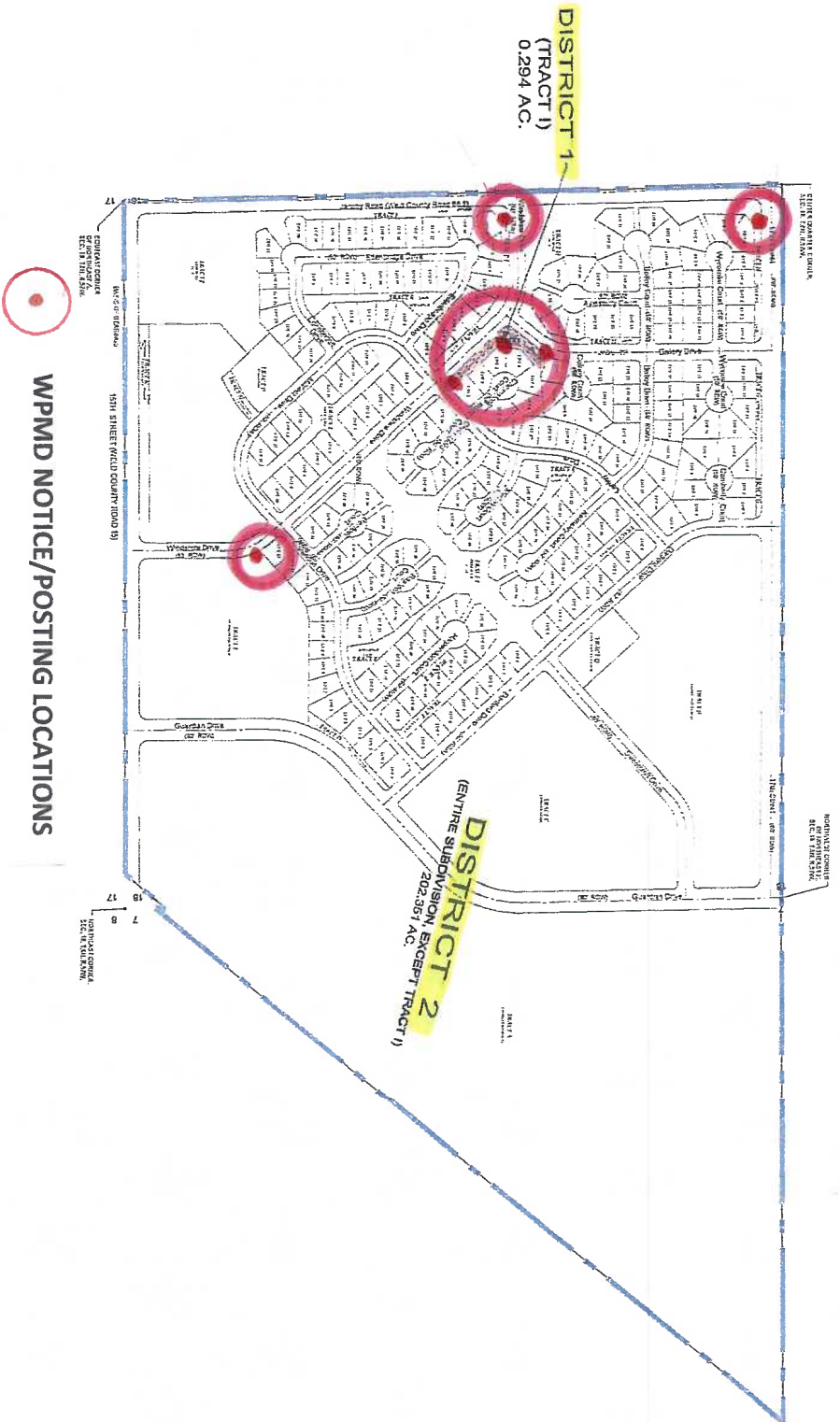
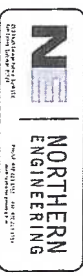


WINDSHIRE PARK METROPOLITAN DISTRICT NOS. 1-2

SECTIONS 7 AND 18, TOWNSHIP 6 NORTH, RANGE 67 WEST,
TOWN OF WINDSOR, COUNTY OF WELD, STATE OF COLORADO

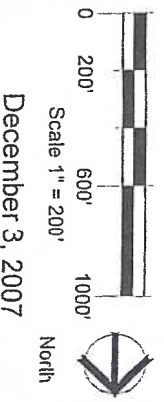


WPMID NOTICE/POSTING LOCATIONS



- Legend:**
- District "Number"
 - Section Corner
 - District 1
 - District 2

District Acreage:
 District 1 = 12,806 Sq. Ft. / 0.294 AC.
 District 2 = 8,814,423 Sq. Ft. / 202,351 AC.



WINDSHIRE PARK METROPOLITAN DISTRICT NOS. 1-2

DISTRICT MAP